

SCIENCE

with The

Manchester College



The
Manchester
College®
be amazing

ABOUT



Do you have a sharp, analytical mind and a passion for science? Are you looking for a rewarding job where you can make a real difference in the world? Whether you want to save lives, fight climate change or make ground-breaking discoveries, a science qualification is your first step.

You'll find scientists in almost every industry across the globe, so taking a science course can open the door to a huge variety of careers, from forensic scientist and biochemist to paramedic, midwife and pharmacist.

And those opportunities are only expected to grow, as jobs in the scientific and technical industries are set to increase astronomically over the next few years.

If you have the passion to make a difference, we can help you gain the skills you'll use throughout your career. You'll be mastering those skills in modern, well-equipped laboratories, led by tutors who are experts in their field. And you won't always be taught on campus, as you'll get to enjoy field trips, attend industry lectures and gain experience out in workplaces.

So what are you waiting for?



CENTRE OF EXCELLENCE for Science

We passionately believe in helping you reach your ultimate goal, focussing on your future employability and developing the skills you need to have a successful career.

If you're aged 16-18, our Centre of Excellence for Science is set up to help you do just that!

Study Programme

You'll join our Centre of Excellence for Science when you enrol on either our Level 2 or Level 3 Applied Science qualification.

If you haven't already obtained a Grade 4 GCSE in English, you'll study to achieve this level of qualification alongside your course. This is a mandatory requirement and it's also essential you achieve this for many careers. A Grade 4 in Maths is a requirement for L3 BTEC Applied Science.



Employability

To prepare you for your future career, you'll take part in a range of 'employability' activities to equip you with the knowledge and experience of careers available to you:

Employability Sessions

You'll be assigned an Employability Tutor and will take part in dedicated 'employability' sessions which will help equip you with the skills you'll need to thrive in the workplace



Work Related Activity

You'll learn more about the industry through:

- Visits from professionals working in a variety of scientific roles in industries such as healthcare and the NHS, pharmaceuticals and 'green' industries.
- Trips to the University of Manchester Museum labs and to hear lectures at the Institute of Engineering and Technology.
- Careers events and activities, such as the six week STEM Careers programme with GM Higher, enabling you to explore future routes into the industry, including university degree career paths and degree apprenticeship routes.

Work Experience Placement

You'll spend at least 35 hours working in external workplaces across the region, assisting with day-to-day tasks and shadowing staff to develop your skills and broaden your knowledge of the industry.

Some of our students spend 50 days or more gaining valuable experience with employers such as Robinsons Brewery, Urmston Aquatics and Everest Pharmacies.

Industry Placement

You may be able to apply for an industry placement, which will give you more than 315 hours of experience with a leading employer.

A placement gives you in-depth knowledge of the industry, allows you to gain hands-on experience and gives you an insight into career pathways. With a placement, you're taking that all important first step onto the ladder; many of our students even go on to gain paid employment with their industry placement employer at the end of the year.



SCIENCE Courses

At The Manchester College, both of our Applied Science courses give you a solid grounding in scientific foundations and include plenty of practical lab work. So they'll help you to kick-start your journey towards a career in any one of a number of fascinating industries.



BTEC Applied Science (Level 2)

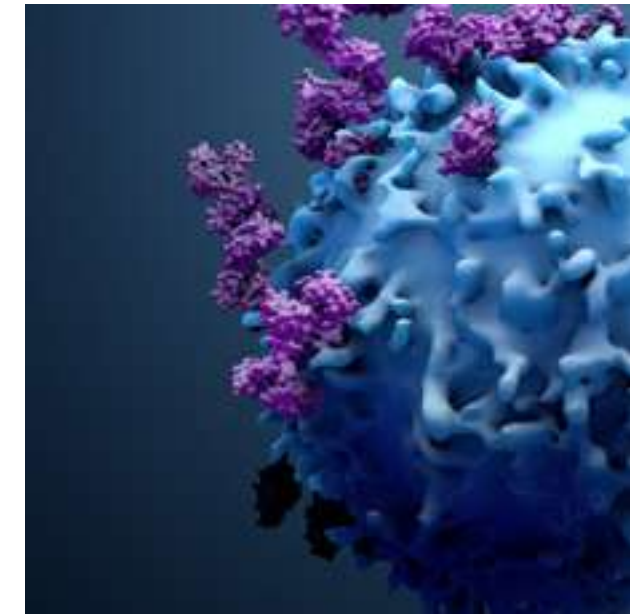
On our Level 2 Applied Science course, you'll be exploring a wide range of scientific theories, in areas such as medicine, forensic science, industry and process sectors. You'll learn all about the scientific principles and spend plenty of time in the lab putting those principles into practice. And, of course, you'll develop the vital analytical skills you'll need if you're to succeed both here at the College and throughout your career.

BTEC Applied Science (Level 3)

Whether you're planning to move onto a degree-level course after your time at TMC, or head straight out into the workplace, this Level 3 course can help you to achieve your goals.

You'll delve even further into the fields of chemistry, biology and physics and see how they're used in real-life applications.

We'll help you to perfect your laboratory techniques, and you'll also start to get a better idea of which career path is right for you, by undertaking optional units such as Practical Chemical Analysis and Diseases and Infections.



T Level Health and Science

From September 2021, you'll be able to study for a Technical Level (T Level) qualification in Health and Science through our Industry Excellence Academy for Health and Social Care.

T Levels are brand new two-year technical alternatives to A Levels. If you're already itching to get out into the workplace, our Level 3 T Level could be perfect, as it combines classroom learning with an extended industry placement of at least 315 hours (approx. 45 days).

CAREERS



BIOMEDICAL SCIENTIST

As a biomedical scientist, you'd be helping to save lives and your work would be vital to many hospital departments, including operating theatres and A&E. You'd carry out a range of laboratory and scientific tests on tissue and fluid samples to help clinicians diagnose and treat diseases. You'd also be helping to evaluate the effectiveness of treatments, to make sure that patients receive tailored care and to give them the best chance of survival.

Salary £24,000 - £50,000



DIAGNOSTIC RADIOGRAPHER

If you're interested in using the latest technology to help people who are ill or injured, diagnostic radiography could be the career for you.

As a diagnostic radiographer you'd use x-ray and ultrasound machines, as well as other forms of imaging technology, to look inside a patient's body and find out what's causing their illness.

As your career progresses, you could also find yourself helping to interpret images, establish treatment plans and undertake intervention procedures, for example by removing kidney stones.

Average Salary £23,000 - £71,000



LABORATORY TECHNICIAN

As a scientific laboratory technician, you'd be involved in a variety of laboratory-based investigations within biological, chemical, physical and life science areas. Your work could assist in the advancement and development of modern medicine and science and play an important role in the foundation stages of research and development (R&D).

Average Salary £15,000 - £40,000



MEET The Team

When you join The Manchester College as a science student, you'll be learning from tutors with a wealth of experience in their field. You'll be able to discuss scientific principles with them, debate complex theories and learn about some of the recent advancements shaking up the science community.



MIKE RAMSAY
Course Leader

Mike's experience in teaching spans more than 30 years. He initially taught in secondary school sixth forms before moving to work in FE colleges, and has been with The Manchester College for three years. Mike specialises in Physics and Applied Science, but has also taught maths and ICT.



NUSRAT AHMED
Biology Tutor

Nusrat previously worked in a pharmacy – dispensing and endorsing prescriptions as well as offering healthcare advice to customers. Nusrat's previous research work included carrying out an independent investigation into the effect of the drug Mebeverine. The aim of the study was to discover the mechanism of action for the antispasmodic effect of the drug. Nusrat has taught both A Level Biology and Applied Sciences, and has been at The Manchester College for three years. Nusrat is interested in all aspects of biology, but particularly enjoys teaching students about genetic engineering and human physiology.



GARETH NOLAN
Physics Tutor

Gareth has worked at TMC for 14 years and has taught Applied Science, Electronics and Physics. He also spent 10 years as an A level Physics examiner for AQA, so is perfectly placed to help students to prepare for their exams.

Before entering the teaching profession, Gareth was a commissioned officer in the Royal Navy. He trained as a helicopter pilot, which involved direct application of his knowledge of principles of flight and weather, and the operation of engines and electrical systems. Gareth often draws on these experiences in classroom discussions and also enjoys teaching students about electronics, as it's easy to demonstrate their direct applications to solving problems in the real world.

WHAT OUR STUDENTS SAY

“

“As well as teaching me valuable course knowledge, the tutors have been very pro-active in securing me a placement in the chemical engineering industry. I’ve gained a vast amount of skills which have made me feel confident and ready to enter the world of work in the future.”

David Ojo
Level 3 Applied Science
Former Droylsden Academy student



Location

The labs at our Shena Simon campus are a world away from the ones you’ll have studied in at school. Each one is dedicated to its own scientific area – biology, chemistry or physics, and together they have all the high-tech equipment you’ll need to experiment, test theories and perfect your skills. Outside the lab, you’ll find the shops, cafés and gardens of Manchester city centre within easy walking distance.



Shena Simon Campus
Shena Simon Campus
Whitworth Street
Manchester
M1 3HB

BUILDING Excellence

The Manchester College strives to deliver an exciting and innovative learning experience to all our students looking to learn new skills. We are committed to playing a pivotal role in shaping the learning of today and for the generations to follow.

In support of our commitment, The College, alongside Higher Education partner UCEN Manchester, is investing £140 million to transform and restructure our campus estate which are set to open throughout 2021 and 2022.

A powerful mix of new and redeveloped campuses, as a student you will enjoy exceptional, state-of-the-art study facilities alongside access to outstanding student support services. Our aim; to create a healthy, happy, productive environment in which you can thrive as we encourage you to create a positive and prosperous future.

Our Science facilities will benefit directly from our investment. It will enable us to expand and enhance our current Centres of Excellence allowing us to remain at the cutting edge of industry standards whilst offering you the very best environments to unleash your creativity and maximise your potential.



HOW TO APPLY

Applying to study at The Manchester College is really easy and can be done online via desktop, tablet or mobile.

Simply follow these eight steps and you'll be on your journey to amazing in no time at all.

- 1 Step 1**
Visit tmc.ac.uk
- 2 Step 2**
Browse our range of courses and choose the course you'd like to apply for
- 3 Step 3**
Apply for the course using our application portal, making sure you complete all of the relevant information
- 4 Step 4**
Receive a conditional offer
- 5 Step 5**
Book to attend an Applicant and Parent Information Evening (16-18 year old students only)
- 6 Step 6**
Register to attending our New Student Welcome Day (16-18 year old students only)
- 7 Step 7**
Join us at enrolment on the date we specify on your invite (For 16-18 year old students applying for September this will be after you receive your results)
- 8 Step 8**
Start your journey to amazing

What's Next

Find out more and apply

To find out more about The Manchester College and our Science department and to apply for one of our courses visit:
tmc.ac.uk/science

Visit us

Join us at one of our Open Events throughout the year to learn more about our courses, visit the campus you could be studying at and tour our facilities, speak to our tutors, view demonstrations and work from current students and much more.

To find out when our next Open Events are taking place visit:
tmc.ac.uk/events

Keep up-to-date

and follow us on:



The Manchester College



@TheMcrCollege



@TheMcrCollege

Got a question?

If you can't find what you're looking for, just get in touch:

✉ enquiries@tmc.ac.uk ☎ 03333 222 444

The Manchester College is committed to equality of opportunity, non-discriminatory practices and supporting individual learners. This information is also available in a range of formats, such as large print, on request.



The
Manchester
College®
be amazing