



T LEVELS
GUIDE FOR
PARENTS

A PARENTS GUIDE TO T LEVELS: DEVELOPING THE NEXT GENERATION OF INDUSTRY EXCELLENCE

- ⬆️ 2 YEAR PROGRAMME
- ⬆️ EQUIVALENT TO 3 A LEVELS
- ⬆️ MINIMUM 315 HOURS (APPROX 45 DAYS) INDUSTRY PLACEMENT

T Levels are a new two year technical programme that provide young people with a high-quality alternative to A Levels. They have been developed in collaboration with employers, and combine theory, practical and classroom learning with a minimum 315 hours (approx 45 days) industry placement. After completing the course students can progress directly into work or further study.

From September 2021 The Manchester College will initially be offering T Levels in our Industry Excellence Academy in four subject areas, with a total of nine courses to choose from:

Construction	Design, Surveying and Planning for Construction
	On-site Construction (Carpentry & Joinery)
	Building Services Engineering for Construction (Electrical Installation)
Digital	Digital, Production, Design and Development in partnership with Silverchip
	Digital Business Services in partnership with Lloyds Banking Group
Education and Childcare	Education and Childcare (Early Years Educator)
Health and Healthcare Science	Health (Assisting Adult Nursing)
	Health (Care of Children and Young People)
	Healthcare Science (Assisting Healthcare Science)

Following this initial roll-out from September 2022 the college will also be offering T Levels in:

- ⬆️ Engineering
- ⬆️ Manufacturing
- ⬆️ Digital Support and services
- ⬆️ Management and Administration

These subject areas have been chosen not only to give a wide variety of choice to our students but also to align with anticipated high demand skill areas for Greater Manchester and the wider North West region in the coming years.

WHO CAN STUDY A T LEVEL?

T Levels can be studied by any young person aged 16-18 and students up to age 24 who have an Education, Health and Care Plan (EHCP).

If your young person is interested in taking a T Level they will need to achieve the below entry requirements.

Subject Area	Entry requirements for T Levels
Construction	Applicants must have a minimum of five GCSEs at Grade 4 or above and this must include English and maths at Grade 6 or above and science at Grade 5 or above. Applicants will also be required to undergo an interview as part of the application process and attend our summer school.
Digital	Applicants must have a minimum of five GCSEs at Grade 4 or above including Grade 4 and above in English and maths, while a previous qualification in digital is desirable. Applicants will also be required to undergo an interview as part of the application process and attend our summer school.
Education and Childcare	Applicants must have a minimum of five GCSEs at Grade 4 or above including Grade 4 and above in English and maths. Applicants will also be required to undergo an interview as part of the application process and attend our summer school. Applicants can also progress from the Level 2 T Level transition course.
Health and Healthcare Science	Applicants must have a minimum of five GCSEs at Grade 4 or above including Grade 4 and above in English, maths and science. Applicants will also be required to undergo an interview as part of the application process and attend our summer school.

If they don't quite achieve these grades and would still like to pursue a T Level there is the option of a one-year Transition Programme, which will then allow them to move on to a T Level the following year and gain a qualification at the same time*. Additionally they may still be accepted on a T Level if they successfully complete the Summer School programme and interview regardless of achieved grades.

We offer the following T Level Transition Programmes as part of our Industry Excellence Academy:

Construction	Design & Surveying (Built Environment)
	On-site Construction (Carpentry & Joinery)
	Building Services Engineering (Electrical Installation)
Digital	Cyber Skills for the Digital Age in partnership with IDT
Education and Childcare	Education and Childcare (Early Years Educator)
Health and Healthcare Science	Health and Science

*Subject to meeting the course requirements to progress onto a T Level.

SUMMER SCHOOL

Both T Levels and Transition Programmes require completion of our Summer School programme as an entry requirement. Summer School is a three-week online introduction to our Industry Excellence Academy, T Levels and T Level Transition Programmes where students can meet their teachers and experience what online learning at The Manchester College is like. Students will take part in a project based learning experience to demonstrate their creativity, teamwork and problem solving skills, as well as their resilience, timekeeping and commitment.

WHAT IS THE DIFFERENCE BETWEEN A T LEVEL AND AN APPRENTICESHIP?



If you opt to take a T Level you will spend 20% of your time on an industry placement and 80% in the classroom.

This is reversed for an apprenticeship where you would typically spend 80% of your time in employment and 20% in the classroom.

If you're interested in finding out more about apprenticeships or would like to go down this route, then Total People, our dedicated apprenticeship provider and sister organisation, will be able to help. You can visit totalpeople.co.uk for more information.

IS A T LEVEL RIGHT FOR MY YOUNG PERSON?

T Levels are suited to students who are moving on from their GCSE studies and want to develop their skills to obtain a qualification that is linked directly to a future career. If your young person is considering a T Level they need to be ready to take the next steps towards employment and commit to a programme that equips them with essential skills to get them ready for industry.

T Levels are also ideal for anyone who would enjoy a practical approach to their studies, including a minimum 45-day industry placement with an employer. All students are allocated a designated weekly lesson to prepare them for their industry placement along with an Employability Partnership named link person who will ensure they are supported prior to starting, and during, their placement.

WILL UNIVERSITIES ACCEPT STUDENTS THAT HAVE A T LEVEL?

Yes they will. While T Levels will prepare students to progress into a career, they can also choose to continue onto University to take a degree. Other options include taking further technical training such as a Higher Apprenticeship, if they don't want to move straight into a job. Upon successful completion of our T Level courses students will be guaranteed progression to a Higher Education course at UCEN Manchester.

HOW ARE T LEVELS GRADED?

The grading system, and relevant UCAS tariff points, can be seen in the table below

T Level grade	Distinction*	Distinction	Merit	Pass (C or above on the core)	Pass (D or E on the core)
A Level equivalent grade	A* A* A*	AAA	BBB	CCC	DDD
UCAS tariff points	168	144	120	96	72

T LEVELS AT THE MANCHESTER COLLEGE: WE ARE INDUSTRY EXCELLENCE

The Manchester College has a reputation for delivering exceptional vocational and technical training that helps students on their journey to amazing.

We passionately believe in helping your young person to reach their ultimate goal, focussing on their future employability and developing the technical and professional skills they will need to have a successful career.

Everything we do, from the courses we offer, the advice and support we provide and the industry placements we will help your young person to secure, is about preparing them for industry and helping them to take the steps they need to secure their first job in their dream career.

To help us achieve this we have developed a wide variety of partnerships with employers and businesses. This has not only enabled our students to gain invaluable workplace experience but also shaped our course offerings to ensure that, after completing their courses, our students have all the skills they need to go on to a rewarding and successful career.

This experience means that we are ideally placed to deliver an exceptional technical education and have everything in place to ensure that your young person can excel when they opt to study a T Level in one of our Industry Excellence Academies. Our expert tutors and dedicated employability team will provide real opportunities to develop their skills helping them to stand out from the crowd.

What's more, when your young person chooses to study a T Level at The Manchester College they will be coming to a college that is both rated Good by Ofsted in all areas and is the number one for college achievement in Greater Manchester.

That's why we consistently meet our aspiration to ensure that our students are successful on their journey to amazing.

THE MANCHESTER COLLEGE T AWARD

Those successful in gaining a place on the T Levels or Transition Programmes will be eligible for the 'T Award', a package of benefits that includes:

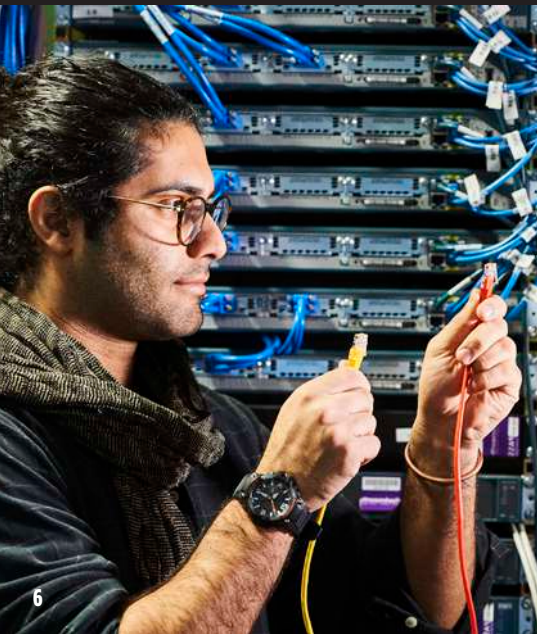
- ↑ £300 PER YEAR BURSARY*
- ↑ CURRICULUM BASED INCENTIVES
- ↑ FREE BRANDED WORK WEAR
- ↑ AUTOMATIC ENROLMENT TO THE MANCHESTER COLLEGE COMPETITIONS TEAMS
- ↑ MINIMUM 20% DELIVERY BY INDUSTRY EXPERTS
- ↑ ACCESS TO INDUSTRY STANDARD LAPTOP* (AS APPROPRIATE)
- ↑ GUARANTEED PROGRESSION TO A HIGHER EDUCATION COURSE AT UCEN MANCHESTER
- ↑ BURSARY INCENTIVE IF PROGRESSING TO UCEN MANCHESTER (T LEVELS)
- ↑ MINIMUM 15 -DAY (TRANSITION PROGRAMMES) OR 45-DAY (T LEVELS) INDUSTRY PLACEMENT
- ↑ DIGITAL UPSKILLING
- ↑ MASTER CLASSES
- ↑ AND MUCH MORE

**Subject to requirements including 95% attendance, positive attitude and grade profile.*

HOW CAN THEY APPLY?

By visiting tmc.ac.uk to apply online to any of the Level 3 T Levels and Level 2 Transition Programmes.

To find out more about T Levels visit our Industry Excellence Academy website: industry-excellence.tmc.ac.uk/t-levels





EQUALITY AND DIVERSITY

The Manchester College is committed to equality of opportunity, non-discriminatory practices and supporting individual learners.

This information is also available in a range of formats, such as large print, on request.

TO FIND OUT MORE ABOUT T LEVELS AND OUR WIDE RANGE OF VOCATIONAL COURSES PLEASE VISIT [TMC.AC.UK](https://www.tmc.ac.uk)

