



T LEVELS:
HEALTH AND
HEALTHCARE SCIENCE

WHAT ARE T LEVELS?

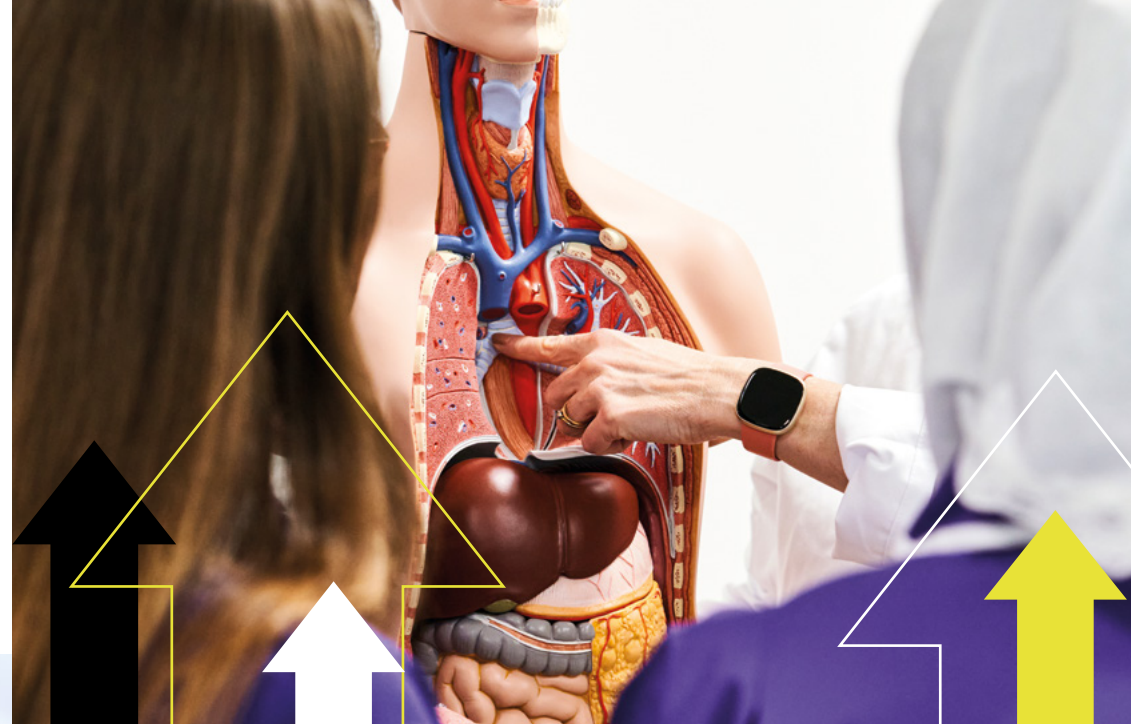
T Levels are a new Level 3, two-year technical programme that provide you with a high-quality alternative to A Levels. They have been developed in collaboration with employers, and combine theory, practical and classroom learning with a minimum 45-day industry placement. If you opt to take a T Level you will spend 20% of your time on an industry placement and 80% in the classroom.

After completing the course you can progress directly into work, on to a Higher Apprenticeship or study a university degree, as T Levels are awarded UCAS points.

We offer the following T Levels in Health and Healthcare Science:

- ↗ Health (Assisting Adult Nursing)
- ↗ Science (Laboratory Science) in partnership with The University of Manchester

These subject areas have been chosen not only to give a wide variety of choice to our students but also to align with anticipated high demand skill areas for Greater Manchester and the wider North West region in the coming years.



WHO CAN STUDY A T LEVEL?

T Levels can be studied by any young person aged 16-18 and students up to age 24 who have an Education, Health and Care Plan (EHCP).

If you are interested in taking a T Level you will need to achieve the below entry requirements:

- ↗ Minimum of five GCSEs at Grade 4 or above including English, maths and science
- ↗ Attend an interview
- ↗ Attend our Jump Start to T Levels programme.

If you don't quite achieve these grades and would still like to pursue a T Level there is the option of a one-year T Level Foundation Year, which will then allow you to move on to a T Level the following year and gain a qualification at the same time*. Additionally you may still be accepted on a T Level if you successfully complete the Jump Start programme and interview regardless of achieved grades.

We offer the following T Level Foundation Year programmes as part of our Industry Excellence Academy:

- ↗ Health and Social Care
- ↗ Science

*Subject to meeting the course requirements.



JUMP START TO T LEVELS

Both our T Levels and T Level Foundation Year require completion of our Jump Start to T Levels programme as an entry requirement.

The Jump Start programme is a two-week introduction to our Industry Excellence Academy, T Level and T Level Foundation Year programmes, where students can meet their tutors and experience what learning at The Manchester College is like.

Students will take part in a learning experience to demonstrate their creativity, teamwork and problem solving skills, as well as their resilience, timekeeping and commitment.

The programme is designed to inspire students to think like healthcare and science practitioners through a range of project-based learning challenges.

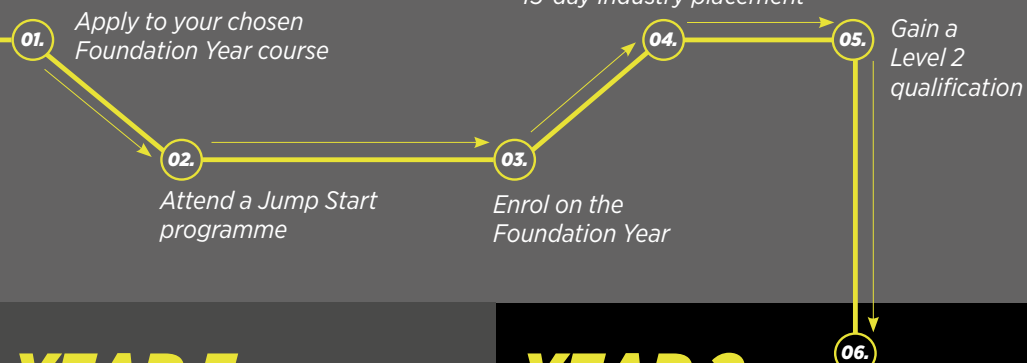
Topics covered on the Jump Start programme include:

- ↑ **Health – Effective communication, person centred care and health education**
- ↑ **Healthcare Science – Handling data, infection control and Health and Safety of environment**
- ↑ **Science – Biology and the environment and application of chemical substances.**

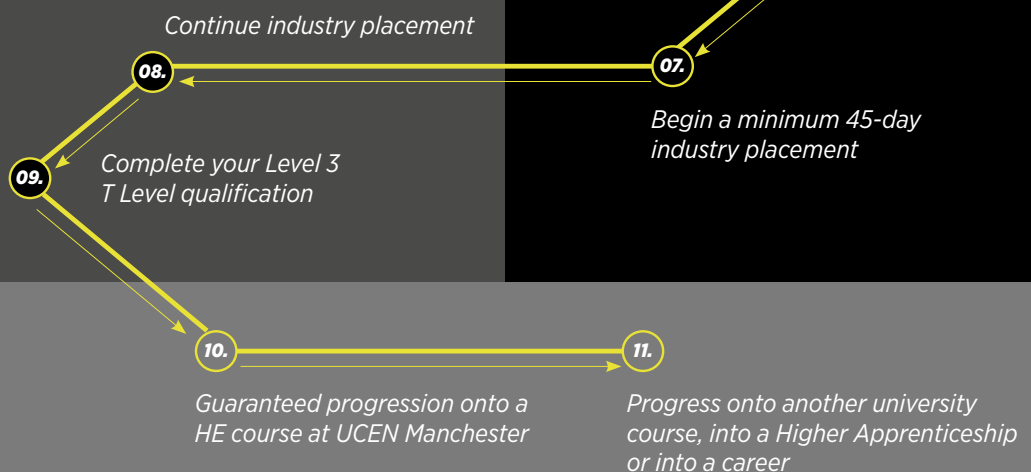
JOURNEY TO T LEVELS

YEAR 1

(If you don't have the grades for a T Level)



YEAR 3



YEAR 2

YEAR 4

(If you choose to progress to UCEN Manchester)





THE MANCHESTER COLLEGE **T** AWARD

Those successful in gaining a place on a T Level will be eligible for the '**T Award**', a package of benefits that includes:

- ⤴ £300 per year bursary*
- ⤴ Free branded work wear
- ⤴ Industry standard laptop
- ⤴ Specialist training such as manual handling and first aid
- ⤴ Opportunity to take part in exciting college-wide competitions
- ⤴ Minimum 20% delivery by industry experts
- ⤴ Guaranteed progression to a Higher Education course at UCEN Manchester
- ⤴ Bursary incentive if progressing to UCEN Manchester
- ⤴ Minimum 45-day industry placement
- ⤴ Digital upskilling
- ⤴ Masterclasses
- ⤴ And much more.

*Subject to requirements including 95% attendance, positive attitude and grade profile.

OUR COURSES

Our courses have been co-developed and are co-delivered by our industry partners to meet the needs of industry and prepare you for work in the sector.

Alongside your studies, you'll undertake a minimum 15-day (Foundation Year) or 45-day (T Level) industry placement, as well as having regular guest speakers, workshops from industry experts, working to live briefs and more. You'll also be assigned a specialist employability tutor to support and prepare you for the world of work.

All our courses will enable you to develop a general understanding of health and science:

- ⤴ Working within the health and science sector
- ⤴ Health, safety and environmental regulations
- ⤴ Managing information and data
- ⤴ Principles of good scientific and clinical practice
- ⤴ Core science concepts including the structure of cells, tissues and large molecules, genetics, microbiology and immunology
- ⤴ Providing person-centred care
- ⤴ Infection prevention and control.


Manchester University
NHS Foundation Trust





T LEVEL

HEALTH (ASSISTING ADULT NURSING)

Level 3 | T Level | Openshaw campus | Two years

WHAT YOU'LL LEARN ON THIS COURSE

If you want to follow a career in adult nursing then this is the T Level for you!

You'll begin by learning all of the essential knowledge and skills you'll need to work in the health and science sector, including how the industry works, core concepts and key regulations, such as managing information, health and safety, and good scientific/clinical practice.

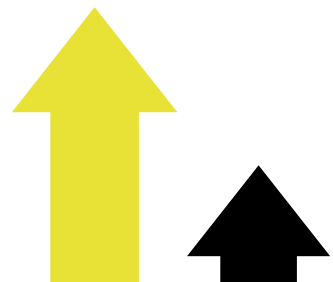
Once you've gained the core knowledge you need you'll specialise in the care of adults. You'll learn all about assisting with clinical tasks and the treatment of service users, providing care and support to service users before, during and after clinical or therapeutic procedures, and taking a physiological reading of service users and recording their data.

WHAT YOU CAN DO WITH THIS T LEVEL

This course is suitable for anyone wanting a career in health and healthcare.

You can progress into roles such as:

- ↑ Paramedic
- ↑ Midwife
- ↑ Nurse.



FOUNDATION YEAR

HEALTH AND SOCIAL CARE

Level 2 | Certificate | Openshaw campus | One year

ENTRY REQUIREMENTS

- ↑ Minimum of four GCSEs at Grade 3 or equivalent
- ↑ Enhanced DBS check
- ↑ Attendance at our Jump Start programme.

WHAT YOU'LL LEARN ON THIS COURSE

This course has been designed to develop your understanding and knowledge of the health and social care sector, so that you can progress onto our T Level course in Health (Assisting Adult Nursing).

As with the T Level itself, the focus is on helping you to gain practical skills that will prove invaluable when you get out into the workplace. And you'll be putting those skills into practice almost straight away, as you'll be benefiting from an industry placement lasting at least 105 hours.

Throughout the course, you'll also have the chance to hear from professionals, like midwives and nurses. They'll talk to you about their own career paths, the sorts of skills and behaviours you'll need to succeed, and what opportunities are open to you. You'll learn all about human lifespan development, health and social care values, infection control and much more ahead of moving on to study a T Level.

WHAT YOU CAN DO WITH THIS QUALIFICATION

Upon successful completion of the Foundation Year, students can progress onto the corresponding Level 3 T Level in Health (Assisting Nursing) the following year.



T LEVEL

SCIENCE (LABORATORY SCIENCE) in partnership with The University of Manchester

Level 3 | T Level | Shena Simon campus | Two years



WHAT YOU'LL LEARN ON THIS COURSE

If you want to follow a career in clinical and research roles in the science sector then our two-year T Level in Science (Laboratory Science) is for you.

During this qualification you'll start by developing an understanding of working within the health and science sector. You'll learn about the principles of good scientific and clinical practice as well as core science concepts including the structure of cells, tissues and large molecules, genetics, microbiology and immunology.

You'll go on to develop your knowledge of topics within biology, chemistry and physics such as cell cycle and cellular respiration, enzyme and protein structure, kinetic changes and much more.

You'll then have the opportunity to put everything you have learnt into practice during your industry placement ahead of your future career in science.

WHAT YOU CAN DO WITH THIS T LEVEL

This course is suitable for anyone wanting a career in science.

You can progress into roles such as:

- ↗ Technical Support Scientist
- ↗ Laboratory Technician.



FOUNDATION YEAR

SCIENCE

Level 2 | Certificate | Shena Simon campus | One year

ENTRY REQUIREMENTS

- ↗ Four Grade 3s in your GCSE
- ↗ Attendance at our Jump Start programme.

WHAT YOU'LL LEARN ON THIS COURSE

This Foundation Year will allow you to gain a qualification and move on to study our T Level in Science the following year.

In the classroom you'll further your knowledge of each core science (biology, chemistry and physics) in preparation for transitioning onto the T Level. Meanwhile, in our labs and on your industry placement, you'll experience what it's like working in the science sector before progressing onto our T Level.

WHAT YOU CAN DO WITH THIS QUALIFICATION

Upon successful completion of the Foundation Year, students can progress onto the corresponding Level 3 T Level in Science (Laboratory Science) in partnership with the University of Manchester the following year.



HOW TO APPLY

To apply to any of our Level 3 T Levels and Level 2 Foundation Year Programmes, visit tmc.ac.uk.

Successful applicants will then receive more information on the Jump Start to T Levels programme.

To find out more about T Levels visit our Industry Excellence Academy website:

industry-excellence.tmc.ac.uk/t-levels

You can also hear from our students on what it's like to study a T Level at The Manchester College by watching our case study videos on our T Level You Tube playlist. Scan the QR code below to watch.




T-LEVELS
THE NEXT LEVEL QUALIFICATION

IEA INDUSTRY
EXCELLENCE
ACADEMY
MANCHESTER

 [The Manchester College](https://www.facebook.com/TheManchesterCollege)

 [@TheMcrCollege](https://twitter.com/TheMcrCollege)

 [@TheMcrCollege](https://www.instagram.com/TheMcrCollege)

 [@themcrcollege](https://www.youtube.com/channel/UC...)

 tmc.ac.uk

 03333 222 444

The Manchester College is committed to equality of opportunity, non-discriminatory practices and supporting individual learners.

This information is also available in a range of formats, such as large print, on request.

All information in this brochure was correct at the time of print.