



T LEVELS:
EDUCATION AND EARLY YEARS

WHAT ARE T LEVELS?

T Levels are a new Level 3, two-year technical programme that provide you with a high-quality alternative to A Levels. They have been developed in collaboration with employers, and combine theory, practical and classroom learning with a minimum 59-day industry placement. If you opt to take a T Level you will spend 20% of your time on an industry placement and 80% in the classroom.

After completing the course you can progress directly into work, on to a Higher Apprenticeship or study a university degree, as T Levels are awarded UCAS points.

From September 2023 we will be offering the following T Levels in Education and Early Years:

- ⬆ Education and Early Years (Educating Early Years)
- ⬆ Education and Early Years (Assisting Teaching)

These subject areas have been chosen to align with anticipated high demand skill areas for Greater Manchester and the wider North West region in the coming years.

WHO CAN STUDY A T LEVEL?

T Levels can be studied by any young person aged 16-18 and students up to age 24 who have an Education, Health and Care Plan (EHCP).

If you are interested in taking a T Level you will need to achieve the below entry requirements:

- ⬆ Minimum of five GCSEs at Grade 4 or above including English and maths
- ⬆ Attend an interview
- ⬆ Attend our Jump Start to T Levels programme

If you don't quite achieve these grades and would still like to pursue a T Level there is the option of a one-year **Transition Programme**, which will then allow you to move on to a T Level the following year and gain a qualification at the same time*. Additionally you may still be accepted on a T Level if you successfully complete the Jump Start programme and interview regardless of achieved grades.

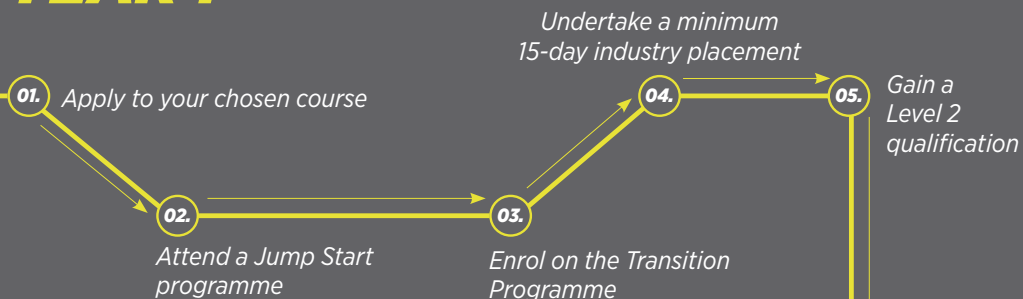
We offer the following T Level Transition Programme as part of our Industry Excellence Academy:

- ⬆ Education and Early Years (Working in Early Years and Primary Settings)

*Subject to meeting the course requirements.

TRANSITION TO T LEVELS

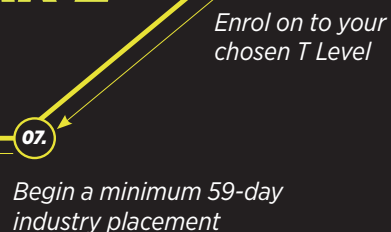
YEAR 1



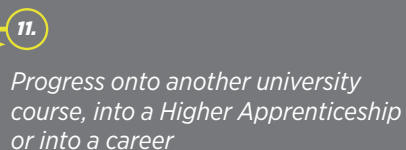
YEAR 3



YEAR 2



YEAR 4



TRANSITION TO T LEVELS

Both T Levels and Transition Programmes require completion of our Jump Start to T Levels programme as an entry requirement.

The Jump Start programme is an introduction to our Industry Excellence Academy, T Levels and T Level Transition Programmes where students can meet their teachers and experience what learning at The Manchester College is like.

Students will take part in a learning experience to demonstrate their creativity, teamwork and problem solving skills, as well as their resilience, timekeeping and commitment.

The programme is designed to inspire students to think like early years educators and primary school practitioners through a range of learning challenges.

Topics covered on the Jump Start programme include:

- ⬆ Supporting education (working in early years and primary settings)
- ⬆ The role of the childcare practitioner
- ⬆ Assisting teaching





THE MANCHESTER COLLEGE **T** AWARD

Those successful in gaining a place on a T Level Programmes will be eligible for the '**T Award**', a package of benefits that includes:

- ⤴ £300 per year bursary*
- ⤴ Free branded work wear
- ⤴ Opportunity to take part in exciting college-wide competitions
- ⤴ Minimum 20% delivery by industry experts
- ⤴ Access to industry standard laptop* (as appropriate)
- ⤴ Guaranteed progression to a Higher Education course at UCEN Manchester
- ⤴ Bursary incentive if progressing to UCEN Manchester
- ⤴ 59-day industry placement
- ⤴ Digital upskilling
- ⤴ Masterclasses
- ⤴ And much more

*Subject to requirements including 95% attendance, positive attitude and grade profile.

OUR COURSES

Our courses have been co-developed and are co-delivered by our industry partners to meet the needs of industry and prepare you for work in the sector.

Alongside your studies, you'll undertake a minimum 15-day (Transition Programme) or 59-day (T Level) industry placement, as well as having regular guest speakers, workshops from industry experts, working to live briefs and more. You'll also be assigned a specialist employability tutor to support and prepare you for the world of work.

All our courses will enable you to develop a general understanding of the education and early years sector, including:

- ⤴ Supporting education
- ⤴ Safeguarding
- ⤴ Health and Safety
- ⤴ Wellbeing
- ⤴ Behaviour
- ⤴ Parents, families and carers
- ⤴ Working with others
- ⤴ Child development
- ⤴ Observation and assessment
- ⤴ Equality and diversity
- ⤴ Special Educational Needs and Disability (SEND)
- ⤴ English as an Additional Language.





T LEVEL

EDUCATION AND EARLY YEARS (EDUCATING EARLY YEARS)

Level 3 | T Level | Openshaw campus | Two years

WHAT YOU'LL LEARN ON THIS COURSE

All students will develop the knowledge and skills of an education and early years professional, including:

- ⬆ Supporting and promoting children's play
- ⬆ Development and early education
- ⬆ Developing relationships with children to facilitate their development
- ⬆ Planning, providing and reviewing care, play and educational opportunities to enable children to progress
- ⬆ Safeguarding and promoting the health, safety and wellbeing of children
- ⬆ Working in partnership with colleagues, parents, carers and other professionals to support children's development

WHAT YOU CAN DO WITH THIS T LEVEL

This course is suitable for anyone wanting a career in early years education, childcare.

You can progress into roles such as:

- ⬆ Nursery Practitioner
- ⬆ Special Educational Needs and Disabilities Co-ordinator (SENDCO)
- ⬆ Team Leader
- ⬆ Room Leader



T LEVEL

EDUCATION AND EARLY YEARS (ASSISTING TEACHING)

Level 3 | T Level | Openshaw campus | Two years

WHAT YOU'LL LEARN ON THIS COURSE

All students will develop the knowledge and skills of an education and early years professional, including:

- ⬆ Supporting the teacher to enhance children's education, individually and in groups
- ⬆ Planning, providing and reviewing educational opportunities in collaboration with teachers and other adults
- ⬆ Safeguarding and promoting the health, safety and wellbeing of children and young people
- ⬆ Recognising, adapting and responding to individual children's needs, including those with SEND, to support development and access to the curriculum

WHAT YOU CAN DO WITH THIS T LEVEL

This course is suitable for anyone wanting a career in assisting teaching.

You can progress into roles such as:

- ⬆ Special Educational Needs (SEN) Teaching Assistant
- ⬆ Teaching Assistant
- ⬆ Teacher
- ⬆ Learning Mentor



TRANSITION PROGRAMME

EDUCATION AND EARLY YEARS (WORKING IN EARLY YEARS AND PRIMARY SETTINGS)

Level 2 | Certificate | Openshaw campus | One year

ENTRY REQUIREMENTS

All students will develop the knowledge and skills of an education and early years professional including:

- ⬆ Four GCSES at Grade 4 or above including English and/or Maths
- ⬆ Enhanced DBS check
- ⬆ Attendance at our Jump Start programme

WHAT YOU'LL LEARN ON THIS COURSE

You will learn about topics specific to education and early years, including:

- ⬆ Child development
- ⬆ Play and learning
- ⬆ Exploring legislation
- ⬆ The role of the childcare practitioner
- ⬆ Nutrition
- ⬆ Physical development and physical activity
- ⬆ GCSE/Functional Skills in maths (if not already achieved)

WHAT YOU CAN DO WITH THIS QUALIFICATION

Progress on to one of our Level 3 T Level courses:

- ⬆ Education and Early Years (Educating Early Years)
- ⬆ Education and Early Years (Assisting Teaching).



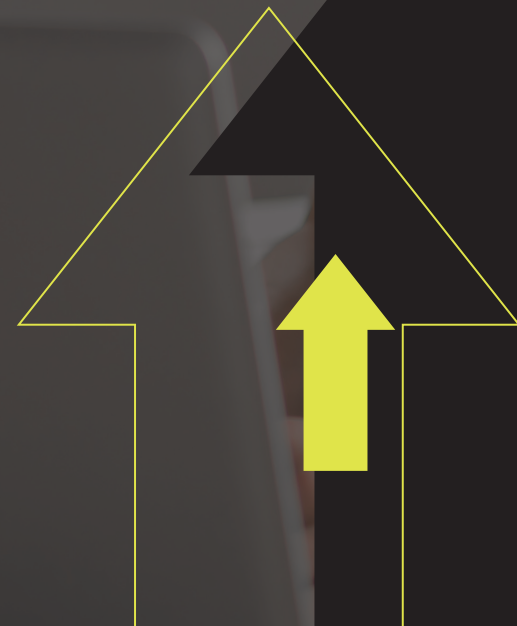
HOW TO APPLY


To apply to any of our Level 3 T Levels and Level 2 Transition Programmes, visit tmc.ac.uk.


Successful applicants will then receive more information on our Jump Start programme.


To find out more about T Levels visit our Industry Excellence Academy website:


industry-excellence.tmc.ac.uk/t-levels




 The Manchester College

 @TheMcrCollege

 @TheMcrCollege

 @themcrcollege

 tmc.ac.uk

 03333 222 444



The Manchester College is committed to equality of opportunity, non-discriminatory practices and supporting individual learners.

This information is also available in a range of formats, such as large print, on request.

All information in this brochure was correct at the time of print.